



- Microprocessor PID Control for 0.1°C Precision
- Timer, Alarm, Auto-Tuning Function
- Built-in Safety and Convenience
- Four Models with capacities from 6 to 22ℓ
- Seamless Stainless Steel Bath (STS 304)

Feature

Precision Digital PID Controller

Provides $\pm 1.0^{\circ}\text{C}$ set accuracy,
Temperature range from ambient $+5^{\circ}\text{C}$ to 99°C .

Front mount touch-sensitive membrane type keypad controller with timer, alarm and auto-tuning function.

Seamless Stainless Steel

Corrosion resistant (STS 304) bath

Various Application

Precision digital water baths are ideal for industrial, pharmaceutical, clinical and biomedical experiments need precision temperature control

Over Temperature Protection

Ensure user safety

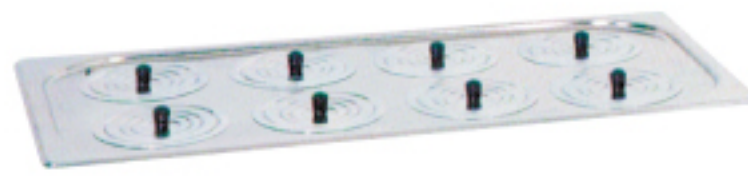
Perforated Cover

Protects heater and sensor from unexpected damage

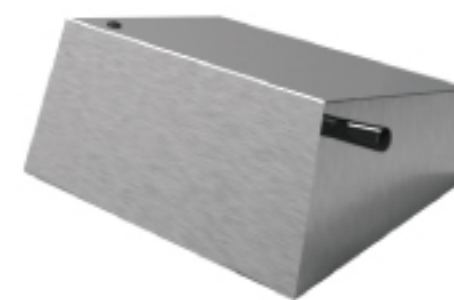
Optional Accessories



Ring cover for 6 holes(11ℓ / 22ℓ)



Ring cover for 8 holes (22ℓ)



Gabled Lid



Test Tube Rack

MODEL		EWB-106D	EWB-111D	EWB-114D	EWB-122D
Dimensions	Inner	300 x 155 x 150	300 x 240 x 150	325 x 298 x 150	500 x 295 x 150
	(W x D x H mm) Outer	327 x 178 x 280	327 x 265 x 280	354 x 325 x 280	537 x 327 x 280
Capacity		6 ℓ	11 ℓ	14 ℓ	22 ℓ
Heater		500W	700W	700W	1400W
Temperature	Range	Ambient $+ 5^{\circ}\text{C}$ to 99°C			
	Set Accuracy	$\pm 0.1^{\circ}\text{C}$			
Material	Interior	Seamless Stainless Steel (STS 304)			
	Exterior	Stainless Steel (STS 430)			
Safety		Over Temp. Cut-Off			
Electric Supply		110V, 60Hz or 220V, 50/60Hz			